

# Installation Guide

Version 0.90

## 1. Package Contents



Power Cord(For AC Power Module Only)



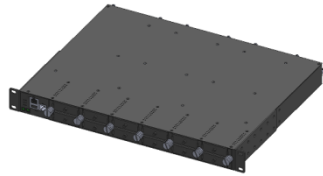
Rubber Foot x 4



Screw x 4



Cover Plate for Power Slot x 2



Chassis x 1



Console Cable x 1(For Management Model Only)



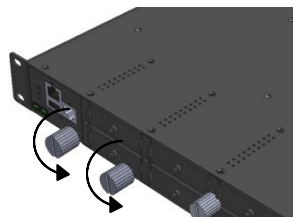
Pulling Cable x 1

## 2. Installation

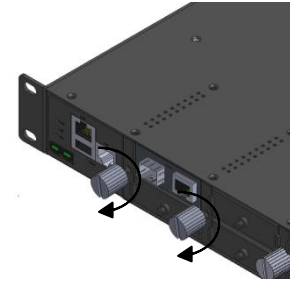
Note: Please wear a grounding device and observe electrostatic discharge precautions before install into the 12 SLOTS MEDIA CONVERTER CENTER CHASSIS.

### 2.1 Install GIGABIT/FAST ETHERNET MEDIA CONVERTER Slide-In Modules

1. Plan the GIGABIT/FAST ETHERNET MEDIA CONVERTER Slide-In Module slot positions
2. Loosen the fastening knobs counterclockwise and remove the cover plate from selected installation slot
3. Insert GIGABIT/FAST ETHERNET MEDIA CONVERTER Slide-In Module carefully and firmly into the selected slot

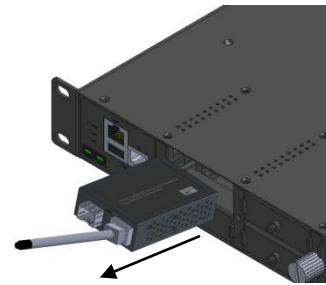


4. Fix the fastening knob clockwise.



5. Repeat steps 2 to 4 for all the GIGABIT/FAST ETHERNET MEDIA CONVERTER Slide-In Module.

6. You may connect the supplied pulling cable with a media converter to pull it out more easily.

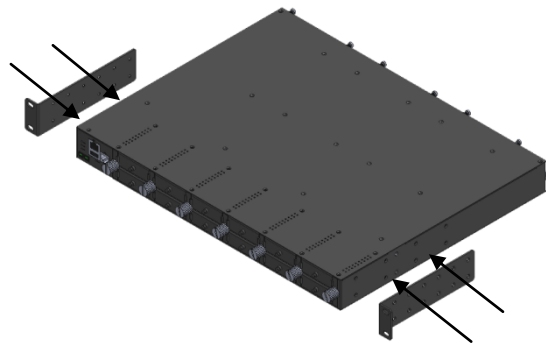


### 2.2 Install 12 SLOTS MEDIA CONVERTER CENTER CHASSIS

Note: Do not block the bottom of the 12 SLOTS MEDIA CONVERTER CENTER CHASSIS.

#### 2.2.1 Standard Rack Installation

1. Plan the 12 SLOTS MEDIA CONVERTER CENTER CHASSIS rack position
2. Fix both mounting brackets into the 12 SLOTS MEDIA CONVERTER CENTER CHASSIS



3. Align the 12 SLOTS MEDIA CONVERTER CENTER CHASSIS with mounting bracket into the selected mounting rail position

4. Fix the 12 SLOTS MEDIA CONVERTER CENTER CHASSIS with mounting brackets into the selected mounting rails position carefully and firmly.

#### 2.2.2 Desk Top Installation

1. Plan the 12 SLOTS MEDIA CONVERTER CENTER CHASSIS desk top position
2. Place the 12 SLOTS MEDIA CONVERTER CENTER CHASSIS on a well ventilated, flat and firmly desk.

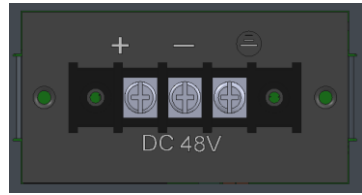
### 2.3 Connect GIGABIT/FAST ETHERNET MEDIA CONVERTER slide-in modules to network

Please refer to the User's Guide that comes with the GIGABIT/FAST ETHERNET MEDIA CONVERTER slide-in modules for cabling specifications and direction.

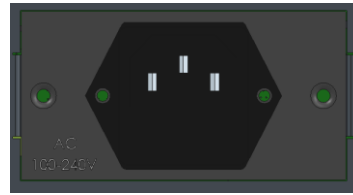
## 2.4 Connect Power Supply

Note: Do NOT turn on power source switch before connecting with 12 SLOTS MEDIA

CONVERTER CENTER CHASSIS.



DC POWER Terminal



AC POWER Socket

NOTE: Power supply is active and concurrent with internal power supply

For Management model, please refer to User's Guide that comes with the Chassis for power module installation.

### 2.4.1 Power On the 12 SLOTS MEDIA CONVERTER CENTER CHASSIS

#### Procedure

1. Check the power outlet
2. **For AC Power** : Connect the power cord with the power outlet  
**For DC Power** : Insert wire positive to switch positive and wire negative to switch negative
3. Turn on the 12 SLOTS MEDIA CONVERTER CENTER CHASSIS power source
4. Verify the 12 SLOTS MEDIA CONVERTER CENTER CHASSIS status
5. Power LED is on

## 3. OPERATION

### LED Status

For management model, please refer to the User's Guide that comes with the chassis for LED indications.

GIGABIT/FAST ETHERNET MEDIA CONVERTER Slide-In Modules LED

Please refer to the User's Manual that comes with the GIGABIT/FAST ETHERNET MEDIA CONVERTER slide-in modules or the chassis for LED indications.